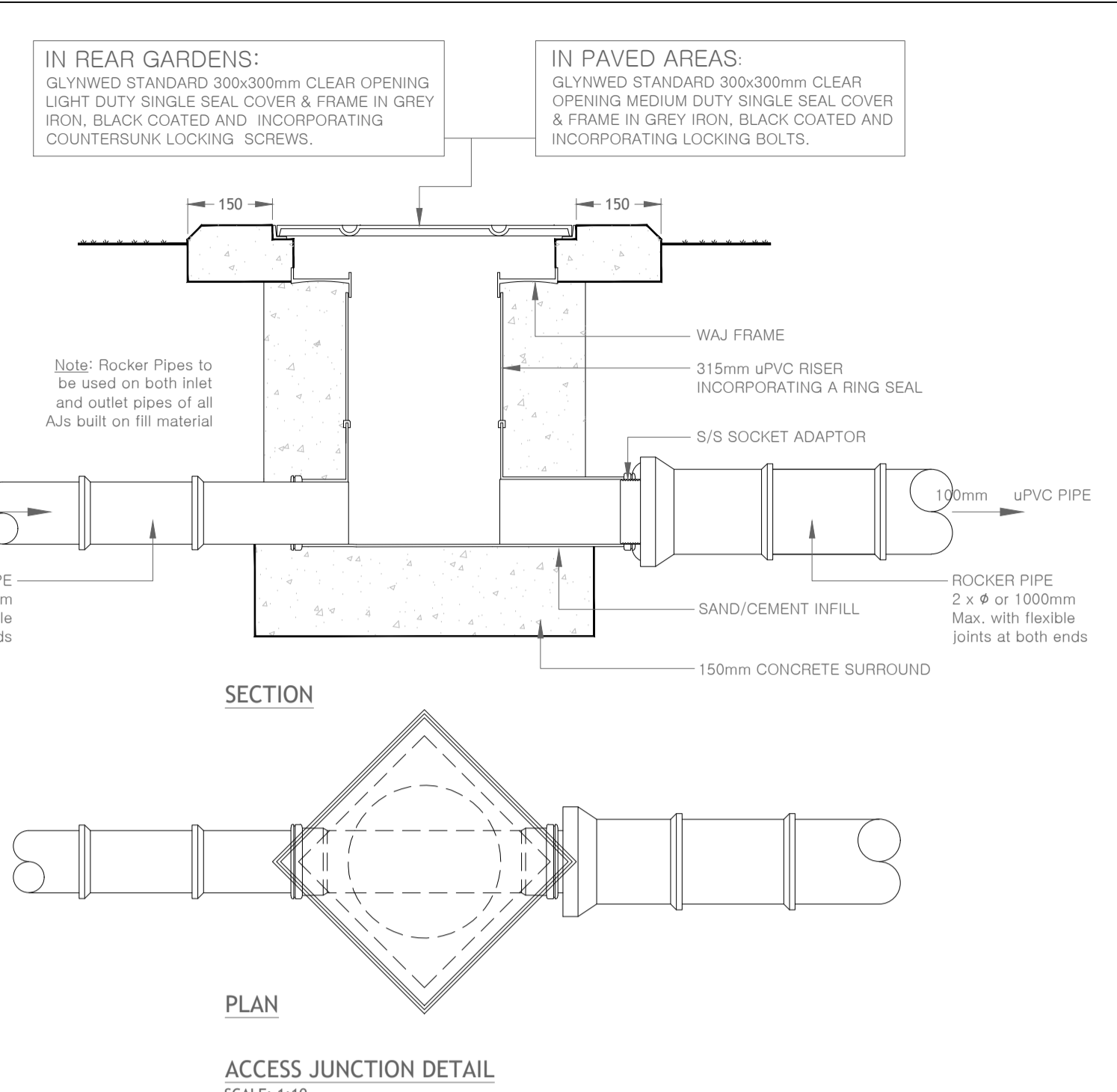


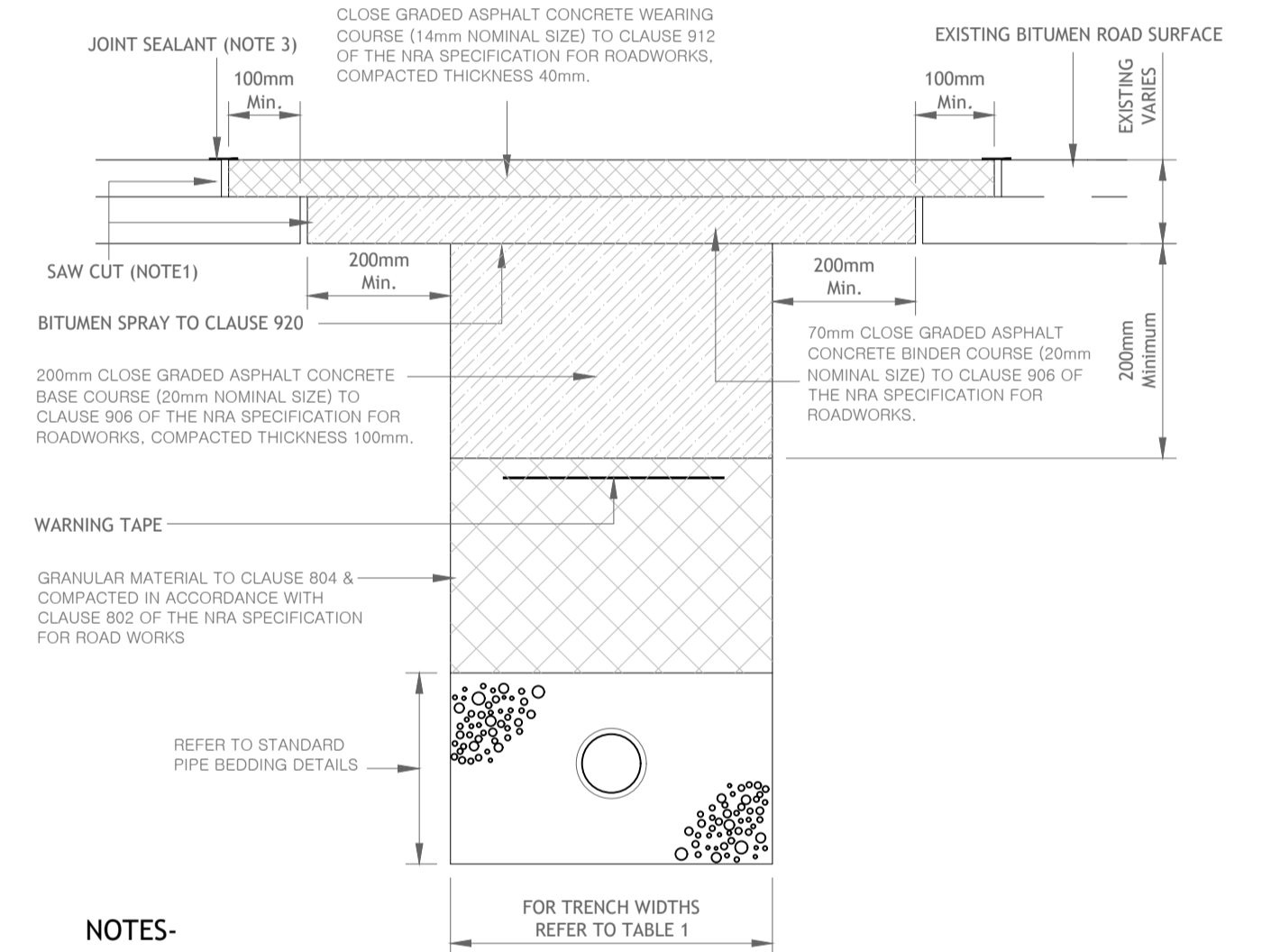
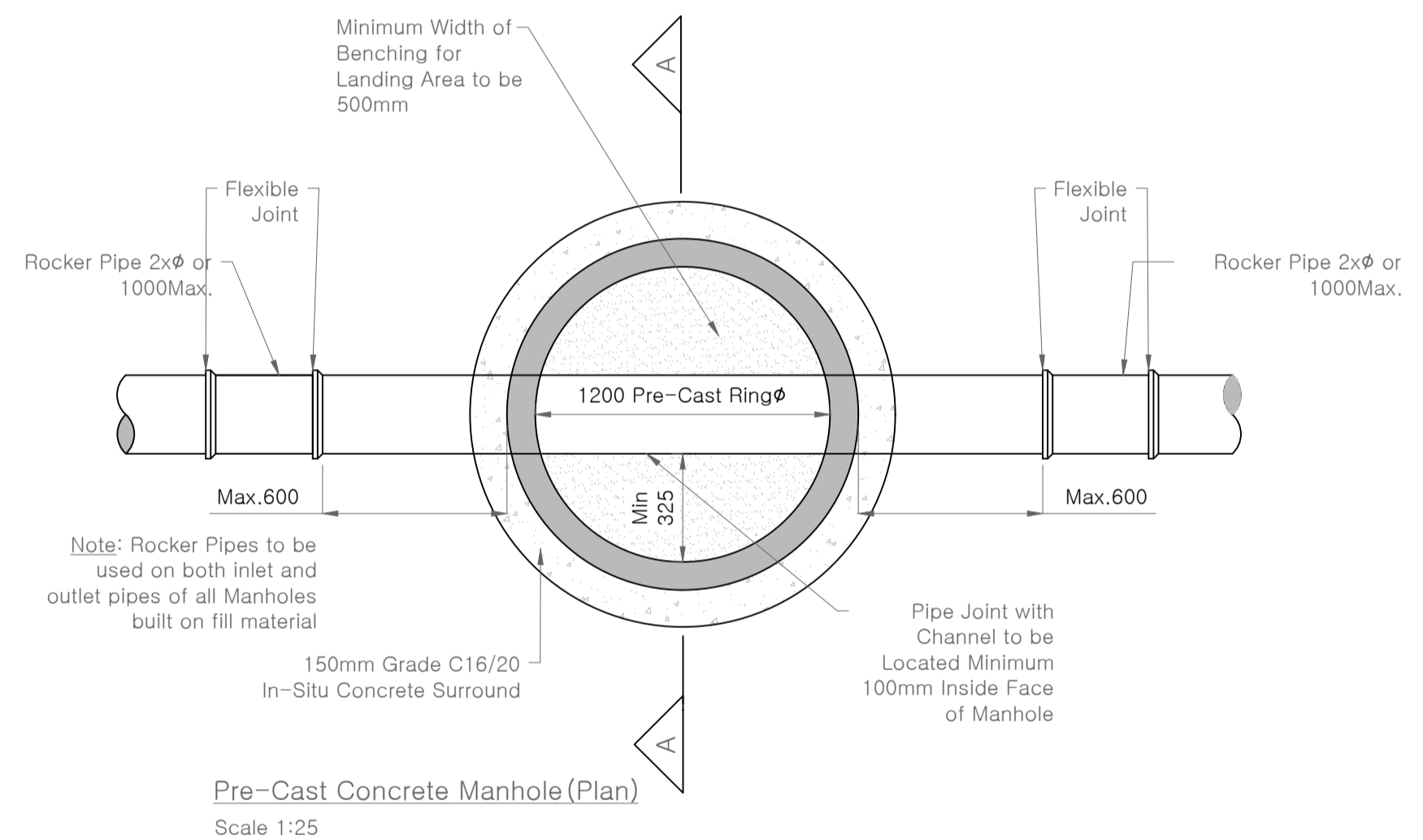
Diameter of Largest Pipe in Manhole (mm)	Internal Diameter of Manhole (mm)
Less than 375	1200
375 to 450	1350
500 to 750	1500

Diameter of Pipe in Manhole (mm)	Length of Pipe (mm)
150 to 450	500 to 750
325 to 750	750 to 1000
900 to 1800	1000 to 1500



**PIPE BEDDING DETAILS**  
All pipe bedding materials and details shall be in accordance with Recommendations for Site Development Works for Housing Areas (DoELG 1998) & Sewers for Adoption 8 - A Design and Construction Guide for Developers.



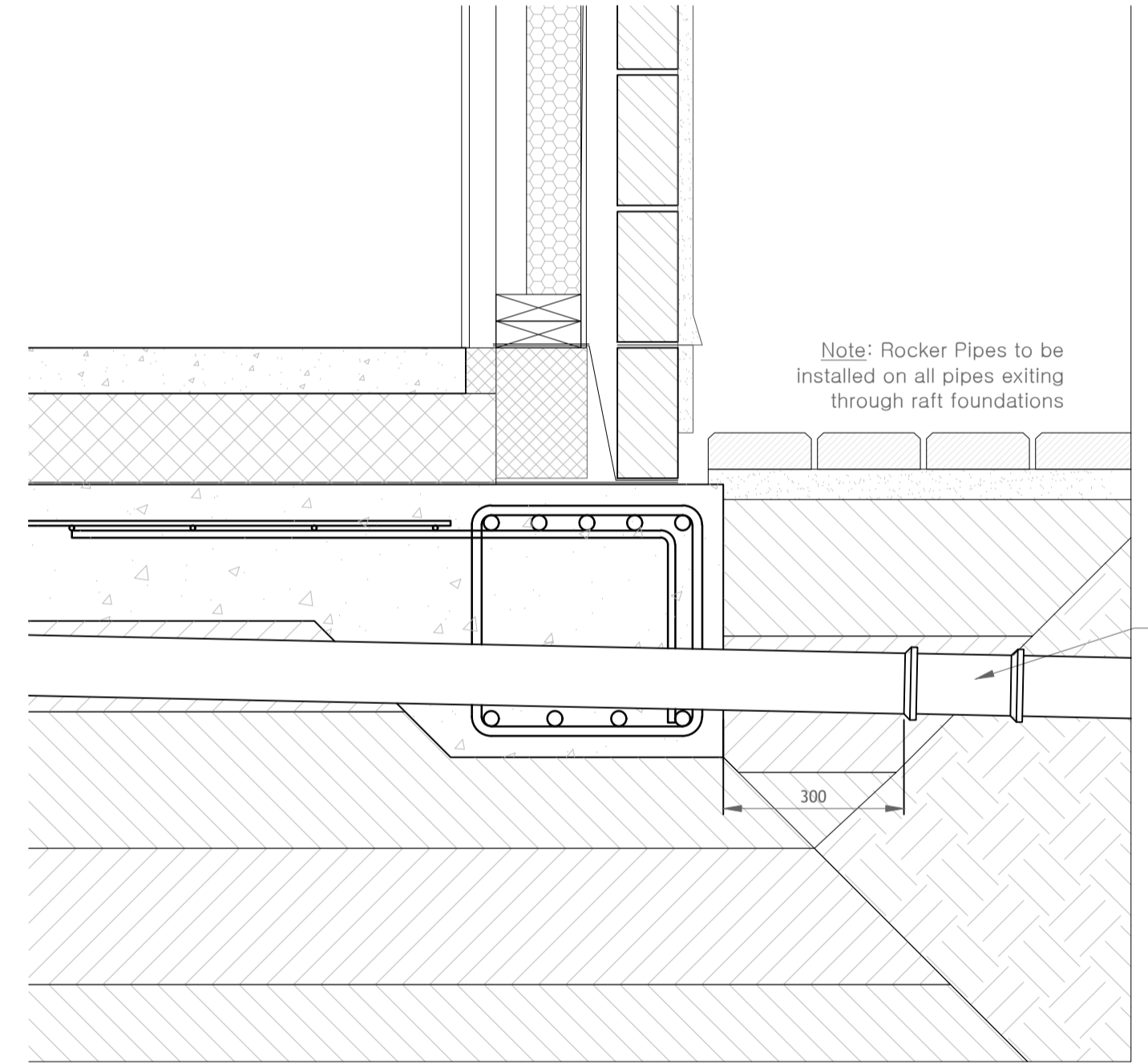
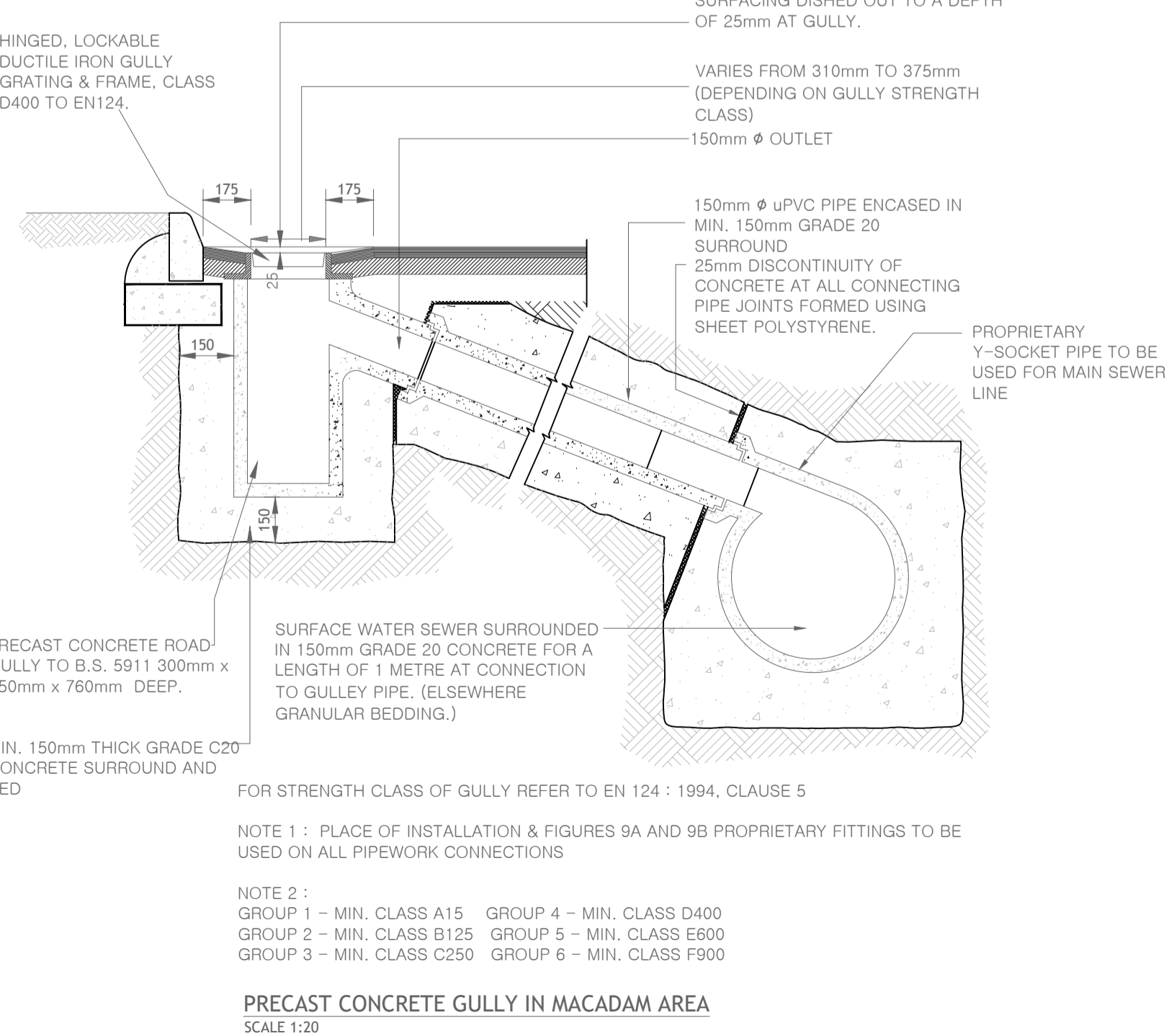
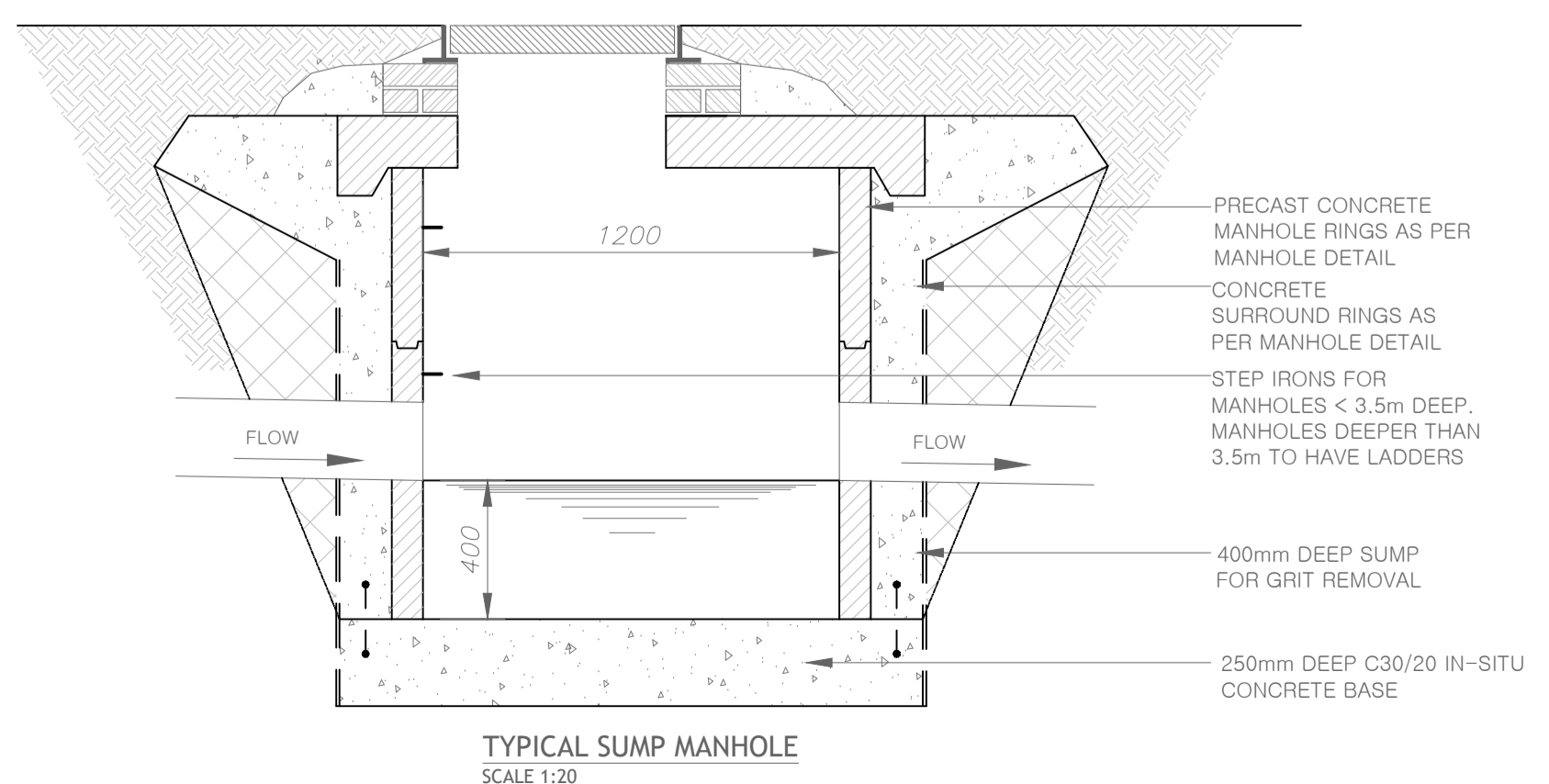
- NOTES-**
- ALL EDGES OF EXCAVATED AREA TO BE SAW CUT AS DETAILED.
  - 100°C HOT BITUMEN BINDER 50 PEN OR COLD THIXOTROPIC BITUMEN 50-70 PEN TO BE APPLIED TO ALL VERTICAL CUTS IN ACCORDANCE WITH BS 584 PRIOR TO THE APPLICATION OF SURFACE LAYERS.
  - JOINTS SEALED WITH HOT BITUMEN AND TOPPED WITH FINE SAND/GRIT TO GET A MINIMUM 55 SKID RESISTANCE VALUE AS DETERMINED BY THE PORTABLE SKID RESISTANCE PENDULUM SHALL NOT EXCEED 3mm THICKNESS AND A WIDTH OF 40mm.

RIGID PIPES	NOMINAL PIPE DIAMETER (mm)	100	150	225	300	375	450	525	600	750	900	1050	1200	1200
	TRENCH WIDTH MIN (mm)	450	500	600	700	950	1050	1150	1250	1400	1950	2100	2300	2450
	TRENCH WIDTH MAX (mm)	650	700	800	900	1150	1250	1350	1450	1600	2150	2300	2500	2650

NOMINAL PIPE DIAMETER (mm)	100	150	200	250	300
TRENCH WIDTH MIN (mm)	450	450	600	600	700
TRENCH WIDTH MAX (mm)	600	600	700	700	850

**TABLE 1 - TRENCH WIDTHS**  
PAVEMENT REINSTATEMENT DETAILS  
NOT TO SCALE



- NOTES - General Pre-Cast Manhole**
- All dimensions are in millimetres, unless noted otherwise.
  - Pre-Cast Manhole Units: Complying with requirements of IS EN 1917 and BS 5911-Part 3.
  - Thicker Manhole bases required for sewers in excess of 3m deep where the size is greater than the standard minimum size.
  - Approved Pre-Cast Concrete Bases may be used incorporating channels, benching etc. subject to Irish Water for review.
  - Manhole roofs should consist of reinforced concrete slab of in-situ concrete, C30/37, with a minimum thickness of 225mm designed to carry all live and dead loads. Alternatively, approved pre-cast concrete roof slabs may be used subject to Irish Water approval and compliance with BS 5911 Part 4:2002.
  - Covers and Frames shall be suitable for road and traffic conditions subject to approval from Cork County Council.
  - 200mm all around, 100mm deep concrete plinth with protective stainless steel metal band around covers in green areas.
  - All chambers to be checked for uplift by the developer based on ground conditions within the site. Should anti-floatation measures be required they shall be subject to approval from Irish Water.
  - All Concrete to be in Accordance with IS EN 206:2013.
  - Benching to be formed of Grade 20/40 concrete and finished with a rendering of 25mm of Class 'B' cement mortar.
  - Concrete surround to be provided to manhole rings where depth to invert exceeds 2.0m or as directed by the Engineer.
- NOTES - Backdrop Manhole**
- All dimensions are in millimetres, unless noted otherwise.
  - Rodding eye chamber shall be covered with approved heavy duty metal covers to IS 261 and BS 5834. Cover and frame shall be suitable for road and traffic conditions and is subject to the approval of Irish Water.
  - Manhole details to be in accordance with STD-WW-10 & 12 as set out in "Irish Water Connection and Developer Service (Wastewater Infrastructure Standard Details)"

**walsh design group**

No. 2 The Mall  
Manorboureen Woods  
Douglas, Co. Cork  
Tel. 021-4774940  
email.info@wdg.ie

**Project: Proposed Residential Development, Coolcarron, Fermoy, Co. Cork**

**Title: Surface Water Drainage Typical Details**

**Client: Cuminn Construction Ltd.**

**Drawn by: HR**

**Scale: As Shown**

**Status: Planning**

**Draw No: 19074-P-500**

**Date: Jan 2021**

**Scale: As Shown**

**Status: Planning**

© COPYRIGHT WALSH DESIGN GROUP, DUBLIN, CO. CORK.  
THIS DRAWING CANNOT BE REPRODUCED WITHOUT WRITTEN PERMISSION.