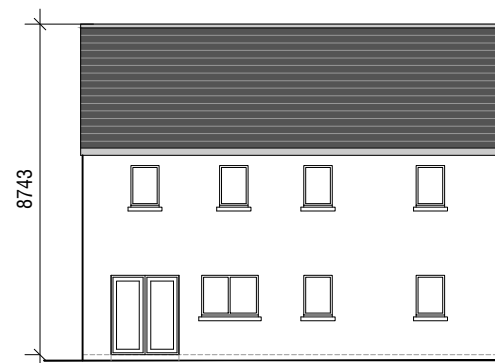
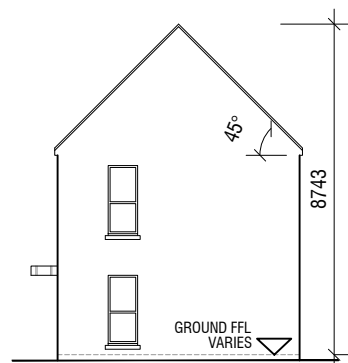
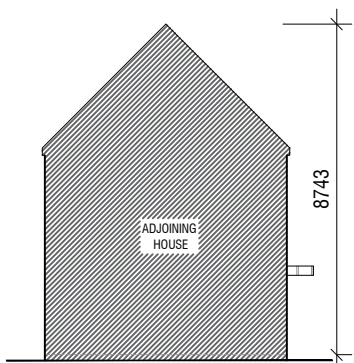
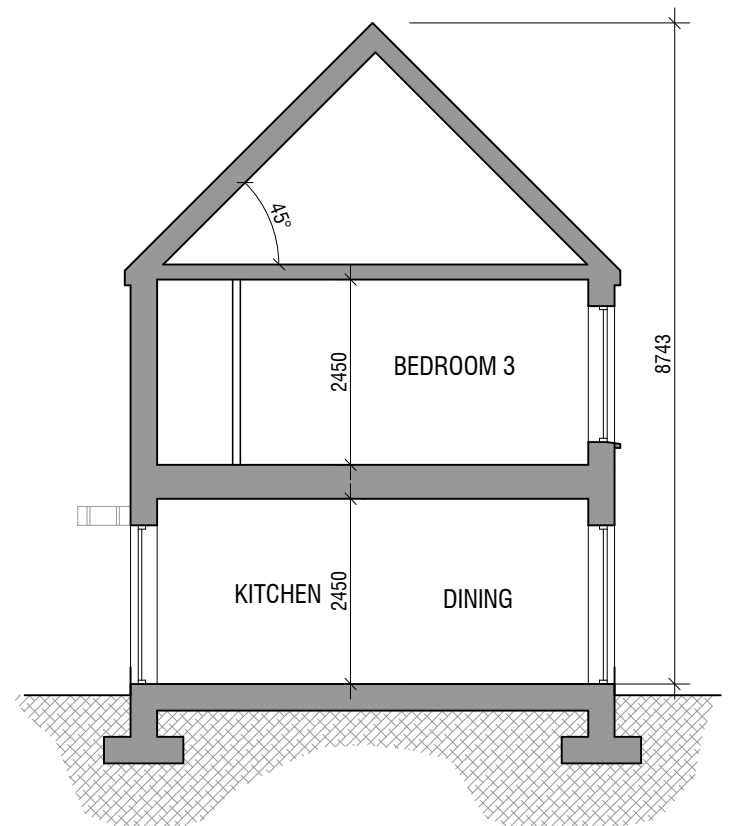


NORTH POINT VARIES
REFER TO SITE LAYOUT
PLAN



HOUSE TYPE C5.1
END OF TERRACE - 3 BEDROOM HOUSE

GROUND FLOOR 60.7 m²
FIRST FLOOR 57.0 m²
TOTAL 117.7 m² / 1267 ft²

PROPOSED MATERIALS
ROOF: SELECTED BLUE / BLACK TILE OR SIMILAR APPROVED
WALLS: PAINTED RENDER & TIMBER CLADDING WHERE INDICATED
CANOPY: ZINC OR APPROVED
WINDOWS: GREY OR APPROVED COLOUR
DOORS: HARDWOOD / PVC TO SELECTED COLOUR